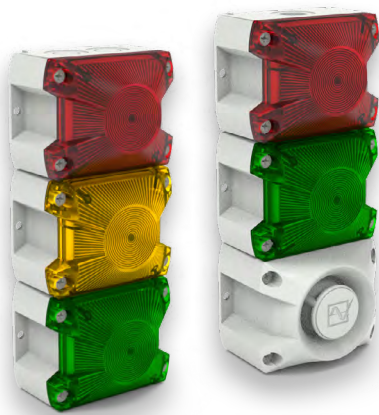


# PYRA® COMPACT LED TRAFFIC LIGHTS

## PY L-S-TL | PY L-S-TL A



Combine it as you need it! PYRA® compact LED traffic lights can be chosen pre-assembled or you can compose it due to your needs. Select between a 2 or 3-stages traffic light only or combine it additionally with a PA1 sounder.

- Selectable combination - Flexible and easy! Feel free to compose your traffic light as you wish! The prewired base can be complemented with several stages of LEDs plus a sounder.
- Selectable signaling modes: continuous-, blinking- and flashing-light
- Selectable blink & flash frequencies - Adaptable to all your applications - select the frequency your gadget requires and boost the perceptibility.
- Multi-voltage-power supply - Plug and play PYRA® LED adapts to most machines and applications no matter the voltage!



protection system



impact-proof housing



operating temperature



warranty



EurAsien Conformity



protection system



brightness adjustable



connector (option)



UL approval (pending)

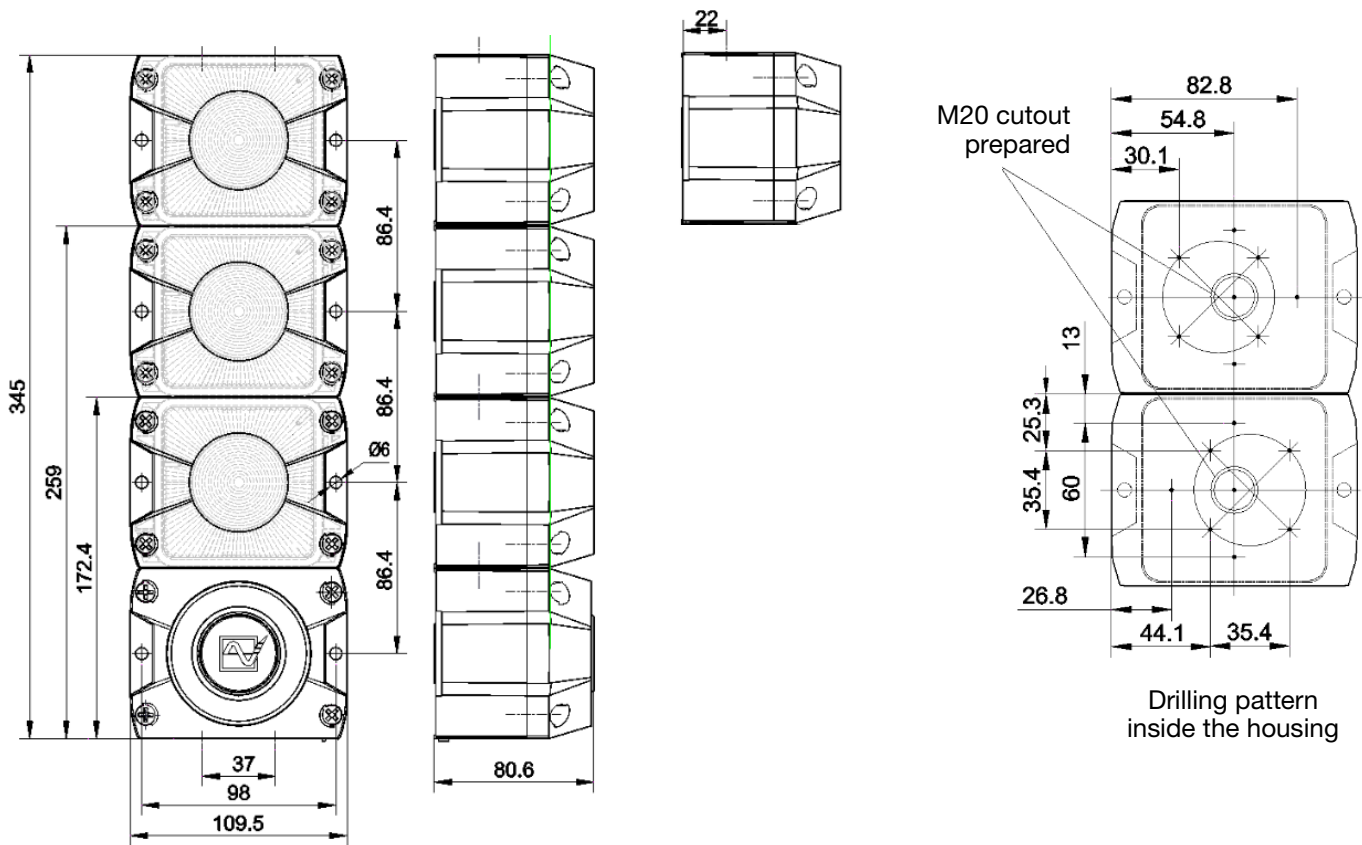
| 3D-COVERAGE PERFORMANCE DATA |                 | PY L-S-TL / PY L-S-TL A |  |                   |                 |
|------------------------------|-----------------|-------------------------|--|-------------------|-----------------|
|                              | VISUAL Indicate | 35.1 x 14.9 x 14.2      |  | AUDIBLE 80 dB (A) | 16 x 13.8 x 16  |
|                              | Warn            | 15.6 x 6.6 x 6.4        |  | 85 dB (A)         | 9 x 7.8 x 9     |
|                              | Alarm           | 7.8 x 3.3 x 3.2         |  | 90 dB (A)         | 5.1 x 4.4 x 5.1 |

To determine the exact signalling area for your needs, please use the online available Pfannenberg Sizing Software PSS.

| PRODUCT                                   | PY L-S-TL  |                    |                  | PY L-S-TLA       |                  |                  |                  |
|---|--|--------------------|------------------|------------------|------------------|------------------|------------------|
| <b>DATA</b>                               |  |                    |                  |                  |                  |                  |                  |
| Rated voltage                             | 115 / 230 V  | 24 V AC            | 12–48 V DC       | 230 V AC         | 115 V AC         | 24 V AC          | 12–48 V DC       |
| Rated frequency                           | 50 / 60 Hz   | 50 / 60 Hz         | –                | 50 / 60 Hz       | 50 / 60 Hz       | 50 / 60 Hz       | –                |
| Operating range                           | 90–253 V   | 21.6–26.4 V        | 10–60 V          | 195–253 V        | 95–127 V AC      | 21.6–26.4 V      | 10–57 V          |
| Current consumption (max/stage)           | 36 mA @ 230 V AC   | 167 mA @ 24 V AC   | 120 mA @ 24 V DC | 36 mA @ 230 V AC | 51 mA @ 115 V AC | 167 mA @ 24 V AC | 120 mA @ 24 V DC |
| Current consumption / sounder stage (max) | –  | –                  | –                | 16 mA @ 230 V AC | 30 mA @ 115 V AC | 150 mA @ 24 V AC | 70 mA @ 24 V DC  |
| Max sound level                           |  | –                  |                  | 105 dB (A) @ 1m  |                  |                  |                  |
| Volume control                            |  | –                  |                  | max. -12 dB      |                  |                  |                  |
| Tones                                     |  | –                  |                  | 80               |                  |                  |                  |
| Operating mode internally selectable      | continuous light / blinking light / flashing light                 |                    |                  |                  |                  |                  |                  |
| Light source                              | one high output LED per single unit                                |                    |                  |                  |                  |                  |                  |
| Light intensity (DIN 5037) <sup>1</sup>   | 76 cd (reducible) per single unit                                  |                    |                  |                  |                  |                  |                  |
| Max. viewing distance                     | 202 m  |                    |                  |                  |                  |                  |                  |
| Operating temperature                     | –40 °C ... +55 °C  |                    |                  |                  |                  |                  |                  |
| Storage temperature                       | –40 °C ... +70 °C  |                    |                  |                  |                  |                  |                  |
| Installation position                     | any  |                    |                  |                  |                  |                  |                  |
| Degree of protection                      | IP 66 (EN 60529), NEMA TYPE 4/4x, IK 08 (EN 50102)                 |                    |                  |                  |                  |                  |                  |
| Service life of the light source          | ≥50,000 hrs  |                    |                  |                  |                  |                  |                  |
| Material                                  | lens   | Polycarbonate (PC) |                  |                  |                  |                  |                  |
|   | housing  | PC / ABS blend     |                  |                  |                  |                  |                  |
| Cable entry                               | 4-stage: 8x M20 pre-embossed<br>2 and 3-stage: 6x M20 pre-embossed |                    |                  |                  |                  |                  |                  |
| Connecting terminal                       | 0.14 - 2.5 mm <sup>2</sup> fine stranded                           |                    |                  |                  |                  |                  |                  |
| Weight per stage                          | 265 g per light / max. 405 g sounder                               |                    |                  |                  |                  |                  |                  |

<sup>1</sup> with a clear lens

**DIMENSIONS**



**ORDERING DETAILS**

## Option 1: Fully assembled traffic lights

Choose a fully assembled traffic light. All you have to do is to select the combination you require. You can choose between traffic lights with two or three different colours.

If you need a more flexible solution and you would like to assemble it individually due to your needs, so please have a look at Option 2 below.

| ORDERING DETAILS | PY L-TL (FULLY ASSEMBLED TRAFFIC LIGHTS WITH GREY BASES) |                |             |
|------------------|--|----------------|-------------|
| Lens colours     | Rated voltage  | 115 / 230 V AC | 12-48 V DC  |
| red-green        | Article number   | 21514642055    | 21514812055 |
| red-yellow-green | Article number   | 21514643055    | 21514813055 |

ORDERING DETAILS

# Option 2: Individually composed traffic lights with or without sounder

Assemble your traffic lights due to your needs.

Step 1: The pre-assembled base is needed to assemble your individual traffic light. Please choose the number of stages - you can select between 2, 3 or 4 stages.

Step 2: Choose your inserts. You can select between different light colours and a sounder. Please note that the number of stages chosen above is at the same time the number of inserts that can be assembled.

| ORDERING DETAILS   | PY L-S-TL (PRE-ASSEMBLED GREY BASE PARTS)<br>PY-TL (LIGHT/SOUNDER INSERTS FOR SELECTABLE COMBINATION) |                             |             |
|--|---|-----------------------------|-------------|
| <b>Step 1 - Please choose the base element with the required number of stages:</b>               |   |                             |             |
| Pre-assembled base parts   | 2 stages  | 3 stages                    | 4 stages    |
| Article numbers  | 21514002055   | 21514003055                 | 21514004055 |
| <b>Step 2 - Select the light and/or sounder inserts (choose all with the same power supply):</b> |   |                             |             |
| Light/sounder inserts  | Rated voltage   | 115 / 230 V AC; 120 V DC    | 12-48 V DC  |
| yellow   | Article number  | 21516643000                 | 21516813000 |
| red  | Article number  | 21516645000                 | 21516815000 |
| green  | Article number  | 21516646000                 | 21516816000 |
| sounder, grey  | Article number  | 21517100055 (230 V AC only) | 21517810055 |

OPTIONS/ACCESSORIES

|  |             |
|--|-------------|
| Tamper-proof sealing for PYRA® / PATROL (4-Pack) | 28300000002 |
| Looking elements for PYRA® / PATROL (4-Pack)     | 28912000000 |

Variant with M12 connection on request

CONFORMITY TO STANDARDS

The visual characteristics of flashing lights conform to the European standard DIN EN 842; **“Machine safety – visual alarm signals”**. Requirements contained in the DIN EN 981 standard; **“Machine safety – system of acoustic and visual alarm and information signals”**, can be fulfilled. The colours “red” for the emergency signal and “yellow” for the warning signal conform to the requirements of IEC 73 / DIN EN 60073 / VDE 0199; **“Coding of display devices and control elements using colours and supplementary means”**.

References to visual alarm devices can be found in the following standards:  
 EN 60825-1      Radiation safety of laser devices, identical to IEC 825 and DIN-VDE 0837  
 DIN EN 54      Fire alarm systems  
 DIN 54113-2      Radiation protection regulations for the technical operation of X-ray equipment up to 500 kV

